

LITTLE, TINY, EMBEDDED, SCADA!

Interface up to 20 loops of control. Include profiling, single setpoint recipes, trending, alarm monitoring\history and graphic objects for each loop, then add data acquisition with historical viewing, and you have ORION.

ORION is Future Design's newest product that provides SCADA in a 5.7" color interface. No external PC software is required for setup. Number of loops, tagnames, alarm messages and more are all configurable via the touch screen interface.

ORION offers configurable real time bar and trend interfaces for all loops as well as a historical data viewer that provides trend replay for any point(s) in the system. "Touch and Drag" zoom is standard for all real time and historical trends. Data history is "Plug & Play" via a USB memory stick.

Data storage for hundreds of tuning, single setpoint recipe and profile recipe files is standard on Orion. The menu driven "Windows" interface is simple and intuitive to use, making system setup a snap.

System security is not a problem with Orion. All of Orion's functions can be enabled or disabled to protect data and restrict loop access.



FDC-ORION FOR FDC CONTROLLERS

- Interface up to 20 loop controllers.
- Graphic, Trend, Bar, Profile and Alarm views.
- View all loops on "Overview" screen.
- Manual and Auto Tune interface views.
- Alarm monitoring and setpoints for all loops.
- More than 1 year of historical data storage.
- Historical data viewer for any point/time.
- Single setpoint, tune and profile storage.
- Interface and history in a single embedded package.

FDC-ORION SERIES SPECIFICATIONS

POWER

24VDC - 500mA maximum current draw.

DISPLAY

Display Type: STN Color LCD

Display Size: 5.7 "

Max Colors: 256

Resolution: 320 X 240

Pixel pitch (HxV,mm): 0.36 X 0.36

Luminance(cd/m²): 100

Storage Temp (C): -20 to 60

Operating Temp (C): 0 TO 45

Backlight: 1 CCFL

Contrast Ration: 30:1

TOUCHSCREEN

Type: 4 wire, analog resistive

Resolution: Continuous

Light transmission: above 80%

Life: 1 million activation minimal

PROCESSOR

Type: Cirrus 200Mhz

MEMORY AND OS

Memory: 64MB of internal RAM

Operating System: Windows CE.net

LOOP INTERFACE

Type: 300,100 & C series controllers using RS485 multidrop interface.

Max Loops: 20

DATA STORAGE

Type: 128 Mb compact flash for firmware/recipes
128 Mb "Plug & Play" USB memory stick for data.

CONNECTION

Serial: Com1, 2 & 3 - RS232/RS485

Ethernet: 10 baseT

USB: 1 client - 2 host

Sound: 16 bit sound output

PHYSICAL

Front Panel: Meets Nema4/IP65

Shock: 10 to 25Hz(X,Y,Z direction 2G, 30 mins)

Dimensions: 204" (H) x 150" (W) x 48" (D) - mm

Weight: 28.21.0 oz. (0.8 kg)

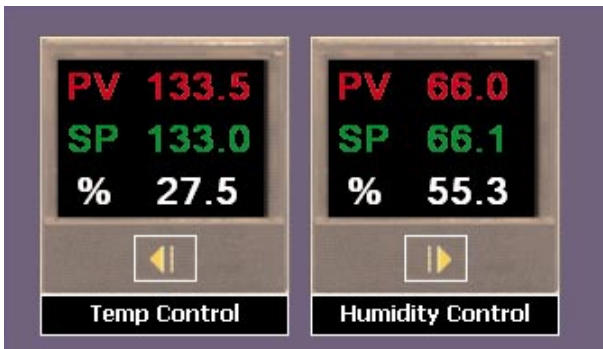
WHAT CAN ORION DO FOR YOU?

1. Orion combines the control interface, PC data storage, strip or circle chart recording into one easy to use package.
2. Easy to configure for custom control applications. No PC software required.
3. Intuitive, easy to use interface for end user customers. Reduced training curve involved.
4. Combine single setpoint and profiling loops in any combination.
5. "Plug and Play" data history/history transfer via USB memory stick.
6. Coming Soon! BlueTooth transfer of data files from Orion to PC or pocketPC.

Connect ORION to FDC controllers with the built-in RS485 interface.



Single and dual views for loops



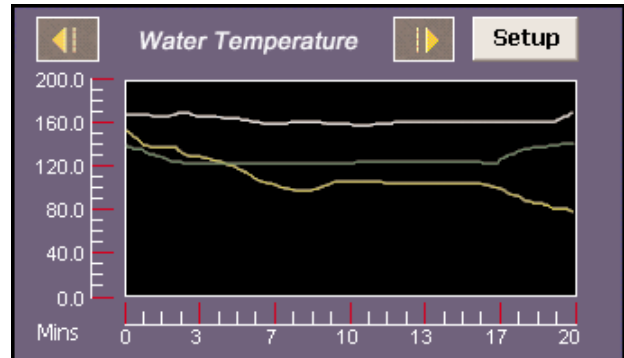
PROFILE OPEN, EDIT,SAVE AND DOWNLOAD!



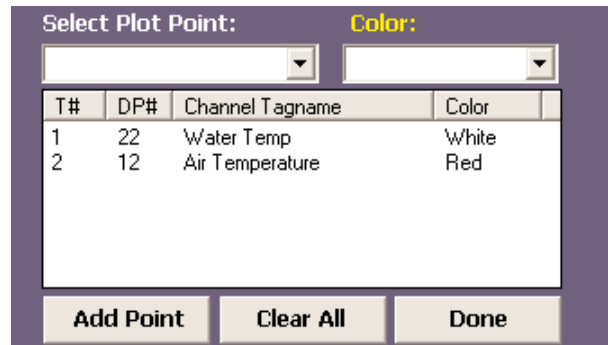
TO ORDER ORION:

1. #FDC-2010 : 5.7" color display interface.
2. #ORION-L-CF : 128Mb smart card (Includes ORION loop control software).
3. #ORION-ISTICK: 128MB "Plug and Play", USB storage device for data history.
4. #CA-2010-20 : 20ft Cable to connect ORION RS485 port to loop controllers(2 wire cable).
5. #PS5R-SD24: 60watt DIN rail power supply (ClassII) Dimensions 95mm(H) X 36mm(W) X 108mm(D)

Real Time and Historical Trends



Historical plot selection for any point



SP Recipes for easy product setup

